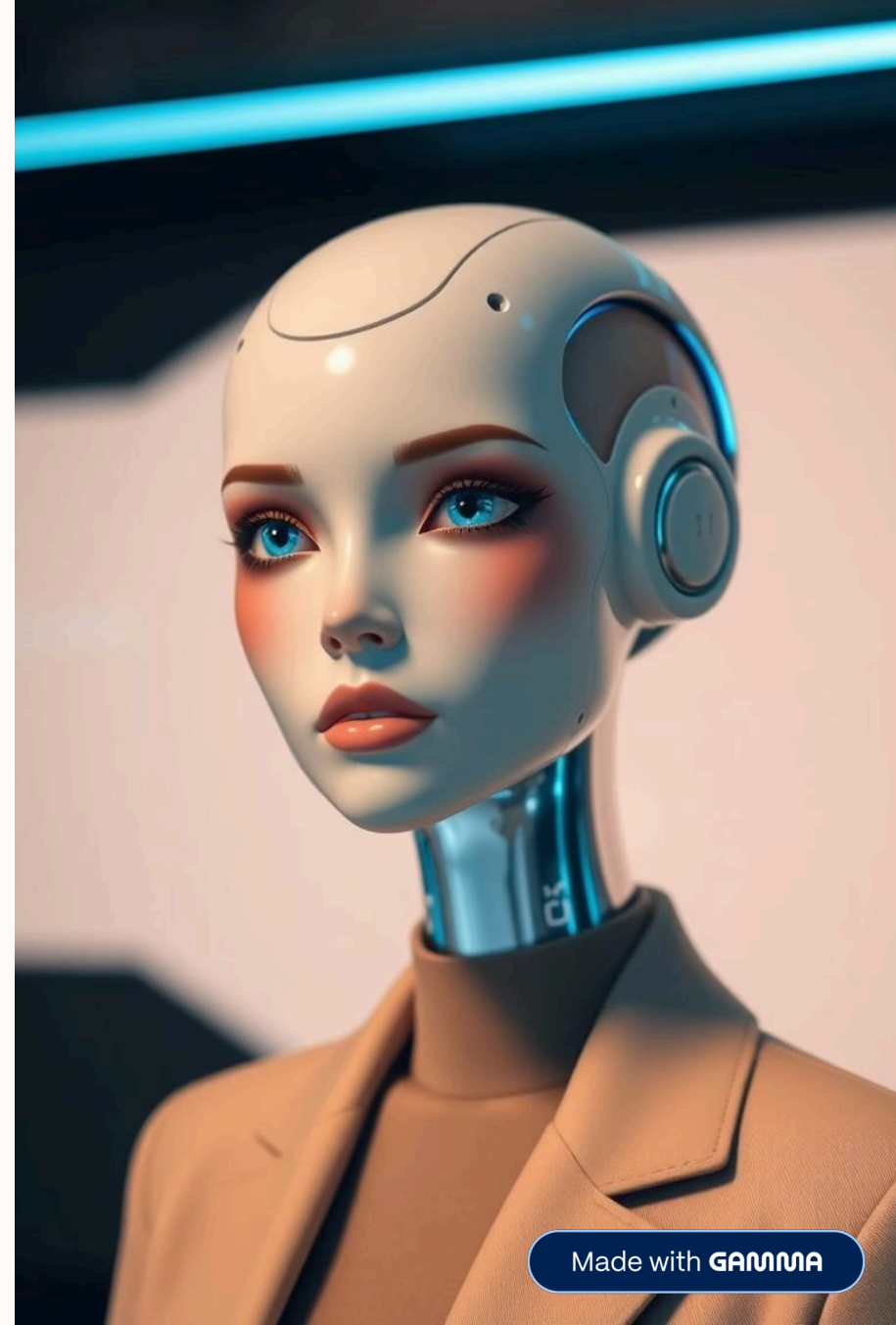


# AI Job Loss: Impact on Human Employment

AI is rapidly reshaping the workforce. CEOs, like Fiverr's, predict AI will replace many human roles.

Companies such as Duolingo and Shopify have already integrated AI to reduce human involvement.



# Fiverr CEO's Vision on AI and Jobs



## Bold Prediction

AI will significantly replace human jobs across sectors.



## Opportunities and Risks

New job types will emerge, but many roles will vanish.



## Call for Adaptation

Workforce must reskill and adapt to changing job demands.



# Duolingo's AI Integration Impact

## Automation in Education

AI drives personalized learning experiences replacing some educators.

- Automated feedback
- Personalized lesson plans

## Employment Effects

Reduced need for traditional language tutors and support staff.

- Job displacement risks
- Demand for AI specialists



# Shopify's Use of AI for Operations

## Customer Service Automation

AI chatbots reduce need for human agents.

## Inventory Management

AI predicts stock needs, automating procurement.

## Marketing Optimization

AI personalizes promotions with minimal human input.



# Broader Workforce Impact



## Job Displacement

Routine roles at highest risk of automation.



## Shift Toward Tech Jobs

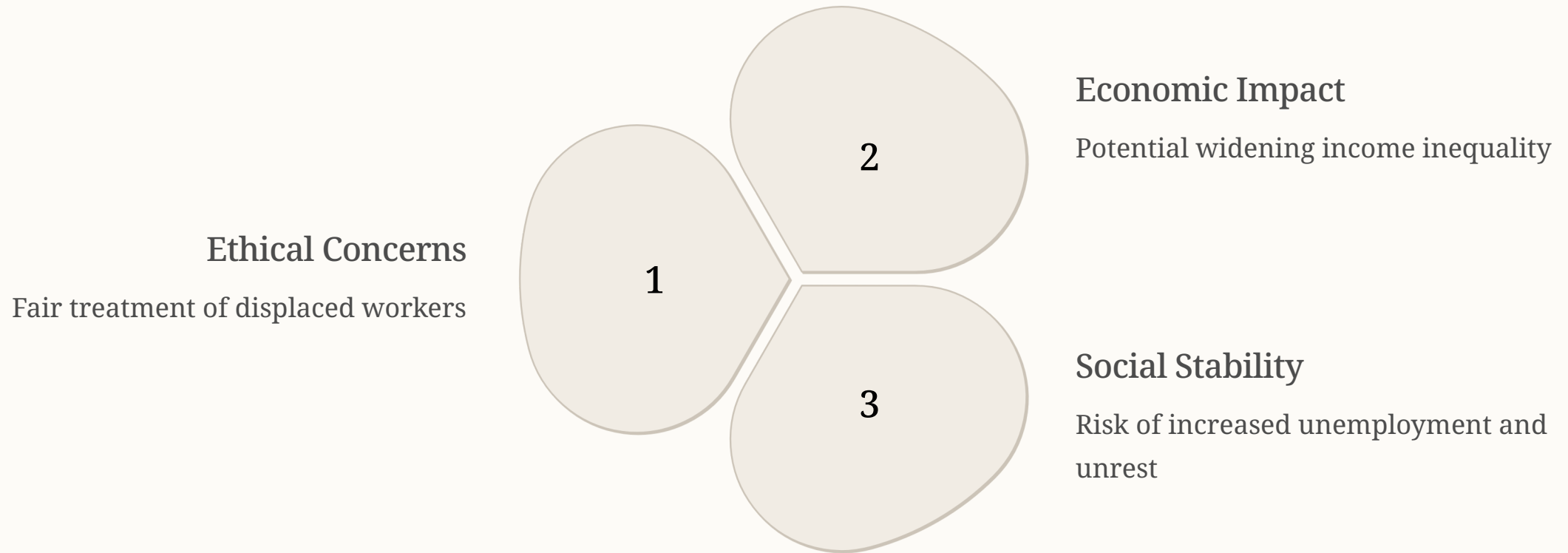
Growing demand for AI and data experts.



## Need for Upskilling

Continuous learning essential for workforce resilience.

# Challenges in AI-driven Replacement







# Strategies to Address AI Employment Shifts

1

## Reskilling Programs

Provide accessible AI and tech training.

2

## Policy Frameworks

Develop social safety nets for affected workers.

3

## Industry Collaboration

Foster partnerships for workforce transition support.

4

## Continuous Learning

Encourage lifelong learning to stay relevant.

# Key Takeaways & Next Steps

## Recognize AI's Impact

Understand AI-driven job disruptions and transformations.

## Promote Adaptation

Implement training and policy support systems.

## Encourage Proactive Planning

Businesses and governments must collaborate for future readiness.

Embracing change with caution and strategy is essential for workforce resilience.

